

GSSP: My Favorite Star Party

Curtis V. Macchioni

August 19, 2016

Overview

When?

Where is It?

Why Go?

What You Should Know

When?

Golden State Star Party is held every year the Wednesday through Sunday or the Saturday through Wednesday nearest the New Moon in late June through Mid-July

2016: Wed June 29 – Sunday July 3 (4 nights)

- New moon was on Monday July 4

2017: Wed June 21 - Sunday, June 25th, (4 nights)

- New moon will be on Fri June 23

Where is GSSP?

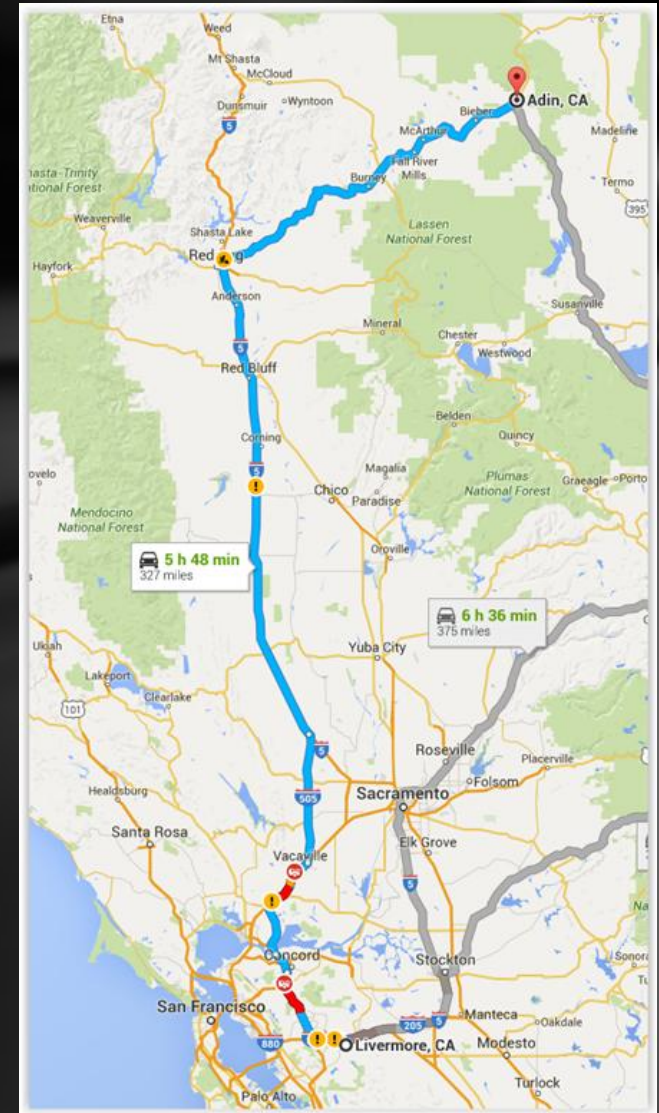
Adin, CA

- Latitude: $41^{\circ} 8' 7.35''\text{N}$
- Longitude: $120^{\circ} 58' 42.95''\text{W}$
- Altitude: 4310ft
- Population 272
- Distance from Livermore 331 miles

I5 North to Redding CA 226 miles

299 East to Bieber, Ca 92 miles

A2 to Bassett Rd, 13 miles



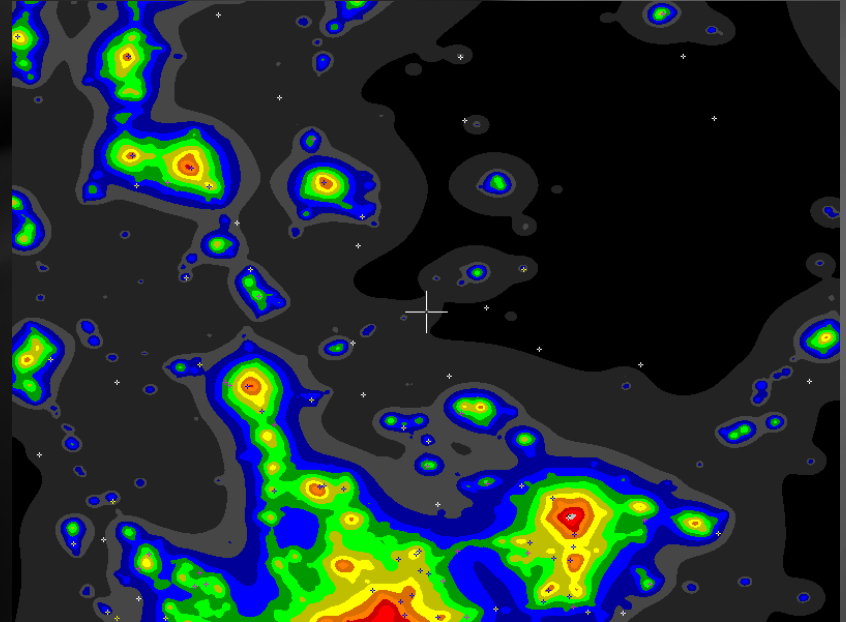
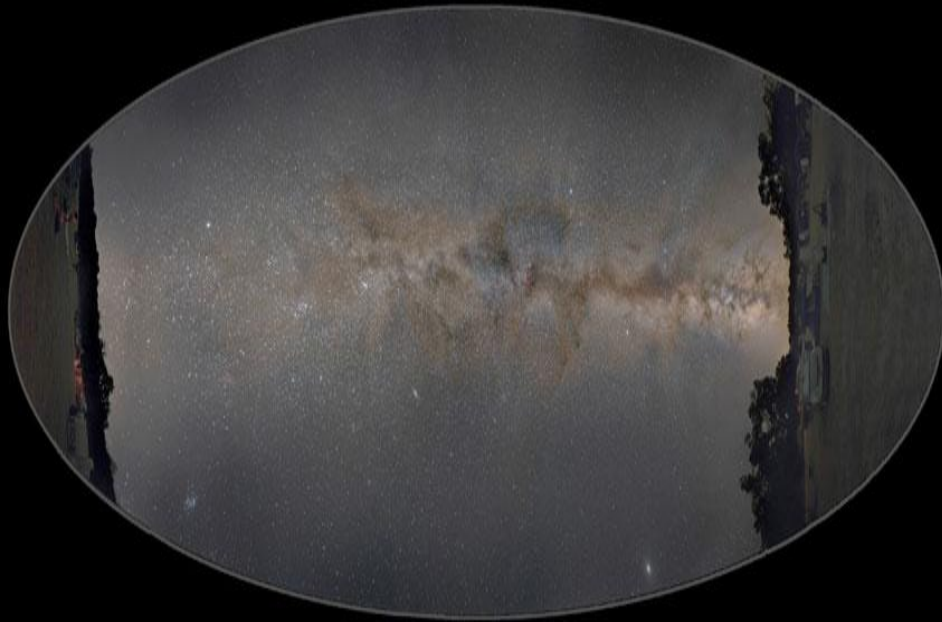
Where Exactly?

Frosty Acres Cattle Ranch



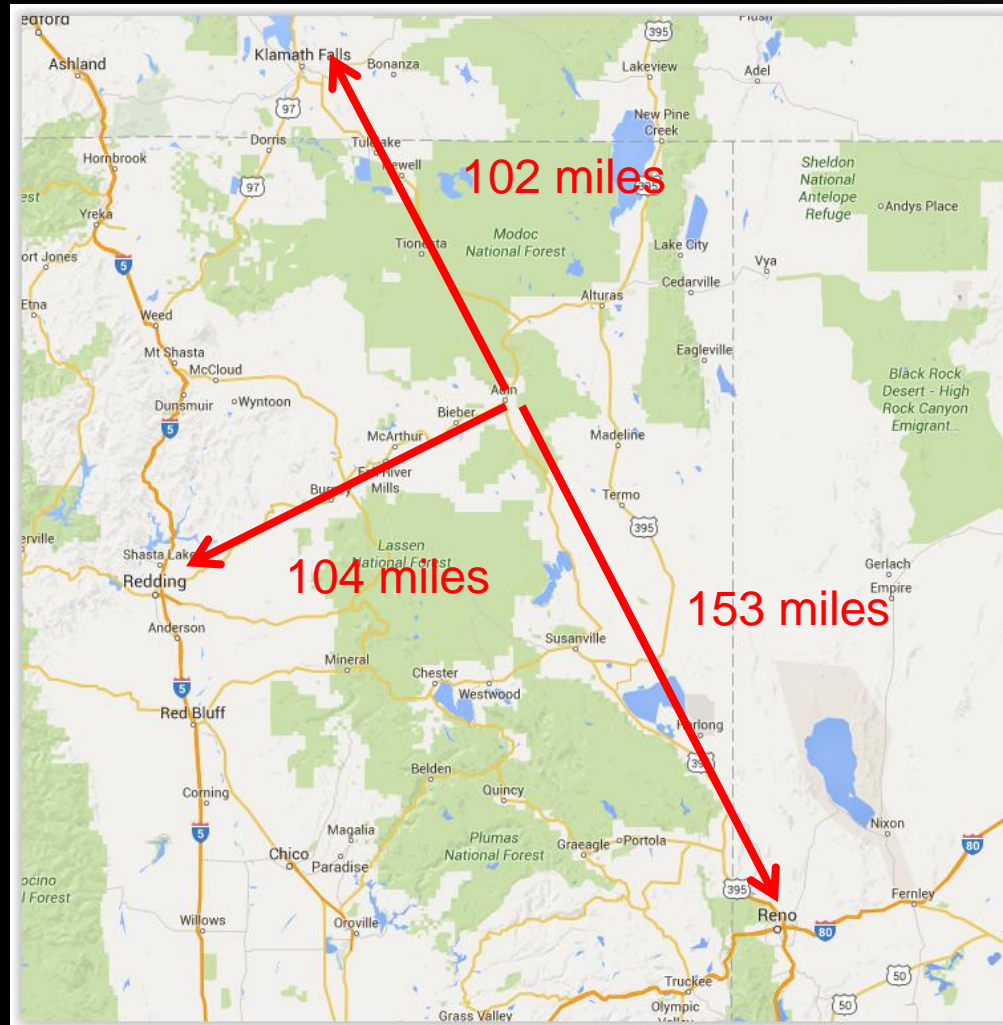
Why? -Dark Skies

- Typical SQM readings ~ 21.64 to 21.83 ... considered excellent dark skies
- By convention, an SQM = 22 is often assumed to be the average brightness of a moonless night sky that's completely free of artificial light pollution.



Why? – Dark Skies

- Nearest major light domes 100 miles away



Why? – Clear Vistas

Wide vistas with no obstructions



Why? – Lots of Astronomers

- Typically 300 or more amateur astronomers & families to share with and learn from – a wide collection of beginners and “experts” in visual, astrophotography, video, spectroscopy, solar, ATM, etc.

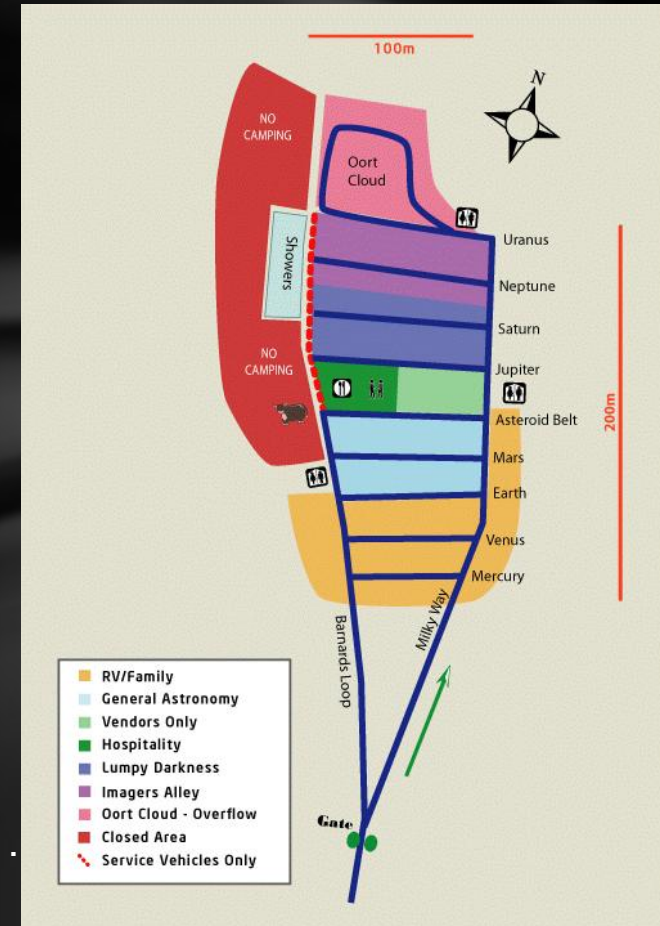


Why? –Telescopes Galore



What You Should Know - Details

- Registration opens Jan 2017
 - (2106 - \$75 for all 5 days or \$25/night)
- Facilities:
 - Shower Truck with Showers & Sinks
 - Porta Potties
 - Hospitality Tent
 - Battery Re-charging station
 - Bieber Community Pool
- On-Site Activities
 - Guest Speakers
 - Raffle
 - Swap Meet
 - Telescope dealers (Explore Scientific, TeleVue, .
 - Telescope Walk About
 - Barbeques (usually 2nights, but costs extra)
 - Pancake breakfast last morning included

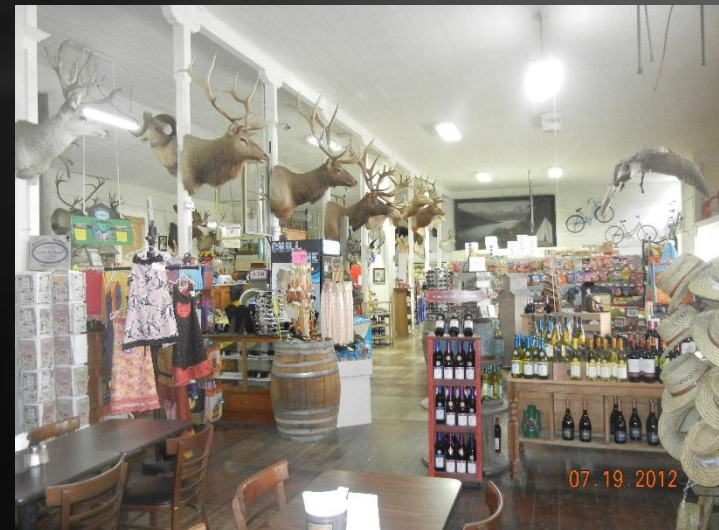


What You Should Know - Weather

- Daytime temperatures ~ 90s with lots of sun
 - No shade so bring your own
 - Need lots of water
 - Plan a day trip or two to get out of the sun
- Nighttime temperatures ~ low in upper 40s or low 50s
- Potential for a thunderstorm during the day or at night
 - Probably >70% clear nights over the past 8 years

What You Should Know - Essentials

- What to Bring
 - Plenty of drinking water
 - Shade & strong stakes to hold everything down – strong daily afternoon wind
 - General stores in Adin (10min away) and Bieber (15min away) have water, ice, basic grocery items, a deli counter, etc.
 - No open fires – need to use propane stoves if cooking
- Gas station & hamburger/ice cream shack in Adin
- Restaurants, hardware store, full grocery ~30 min west
- Nearest big city, Susanville ~65miles away (Walmart, CVS, etc.)



What You Should Know – Sleeping Accommodations

Tents, RVs, Pop-Ups, Car Camping



What You Should Know – Side Trips

- Lassen Park North Entrance - 82miles
- Burney Falls – 50 miles
- Hat Creek Observatory – 58 miles
- Lava Beds National Monument – 64 miles
- Modoc & Lassen National Forests

